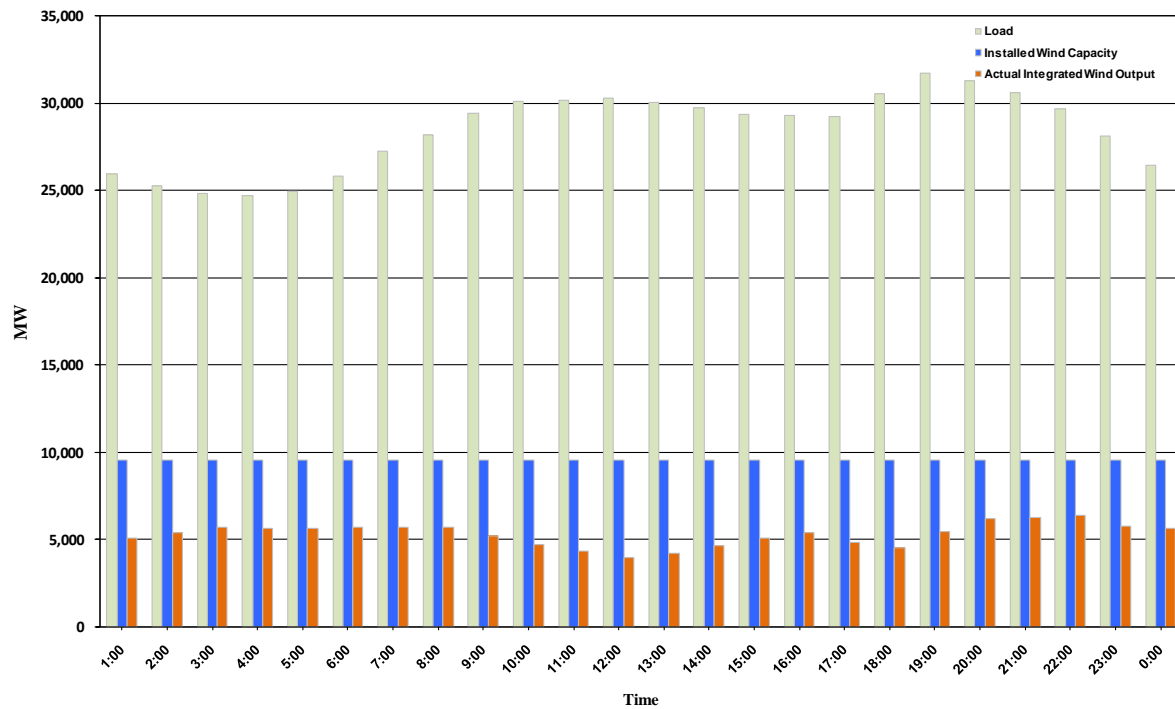




ERCOT Grid Operations Wind Integration Report: 11/20/10

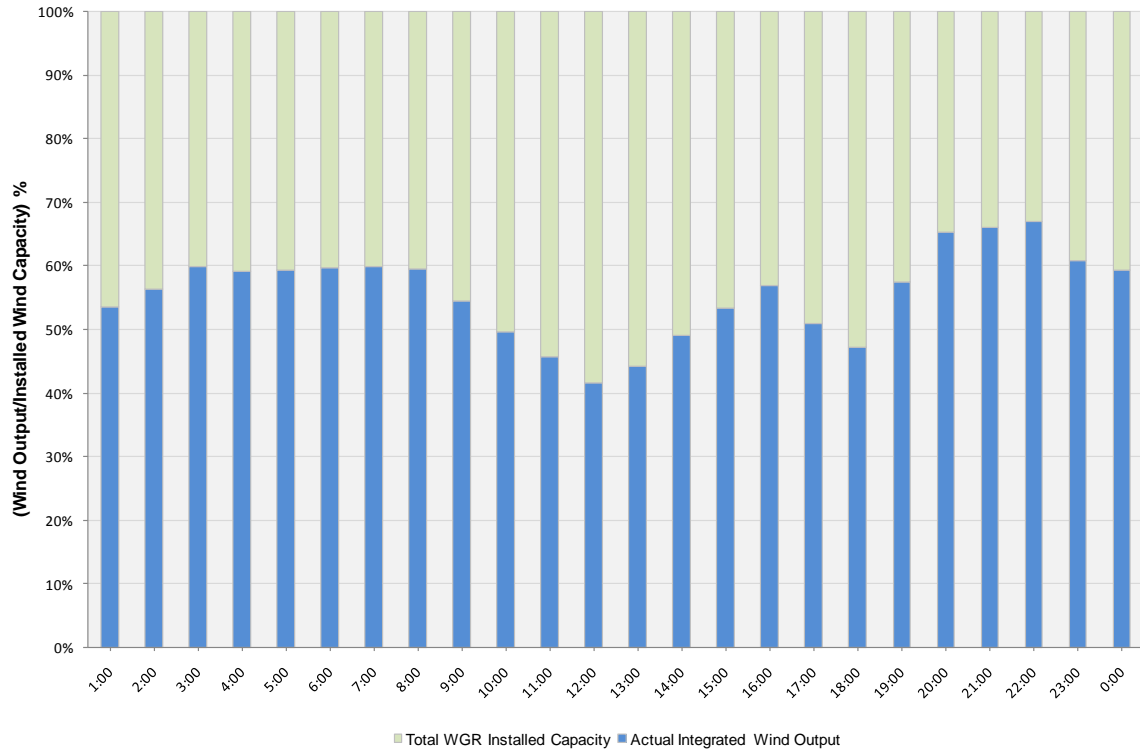
Peak Load	31,717 MW
Load Peak Hour	19
Wind Record 06/12/10	7016 MW
Max Wind value	6637 MW
Wind Peak Hour	21:06:36
Wind Integration %	21.98

Hourly Average Actual Load vs. Actual Wind Output
11-20-2010

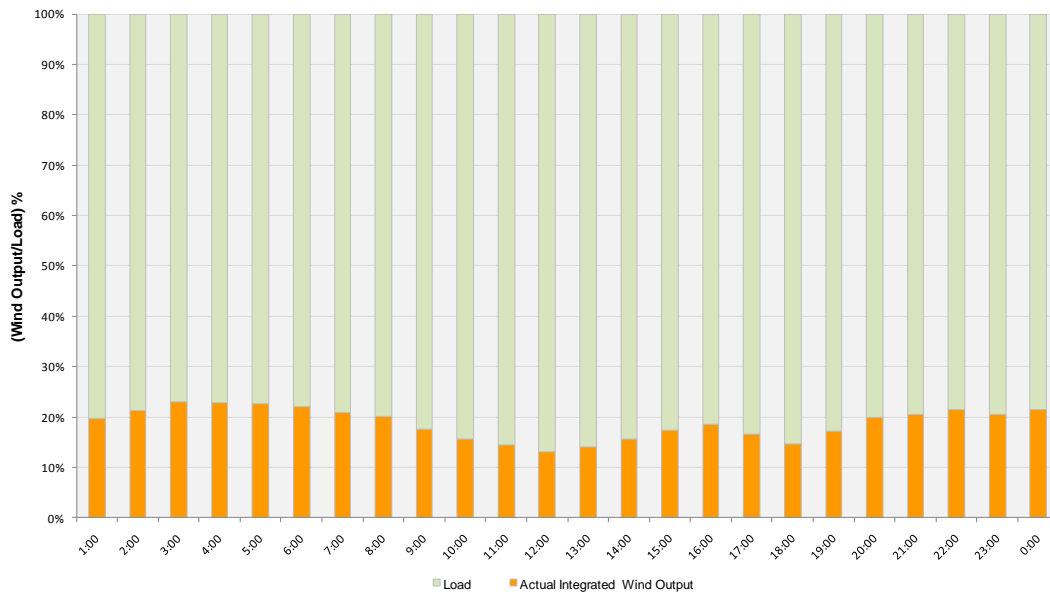




Actual Wind Output as a Percentage of the Total Installed Wind Capacity
11-20-2010



Actual Wind Output as a Percentage of the ERCOT Load
11-20-2010





ERCOT Load vs. Actual Wind Output 11/13/10 - 11/20/10

